

# LAARS



LAARS brings extended vision, AI based analytics and data-driven decision making into video surveillance.

## Breakthrough in Airside Monitoring

In organized and dynamic environments like airports, it is evident that faster information flow can better keep operations on track. LAARS accelerates information processing by extending human vision and applying advanced algorithms to better understand what is happening in the monitored area. Its sensors see much farther, use a broader range of electromagnetic spectrum for monitoring and analyze all movements throughout the entire airside simultaneously.

## How can you benefit by using LAARS?

- It can make your airport more secure and better organized.
- It provides high-resolution visual information of all airside areas both in real-time and historical mode.
- LAARS is an advanced Real-time Decision Making Support system, which tracks and analyzes all object movements and generates alerts on violations and possible incidents.
- The system supports both short-term and long-term strategic decisions by providing information on aircraft movements and turnaround processes.
- LAARS can contribute to increase airport throughput and shorten turnaround times.
- Far less personnel is needed to monitor the entire airside area and keep all ground processes on track.

## Involve computer vision, get smart functions

LAARS enhances the efficiency of day-by-day operations by providing AI-powered Video Content Analysis and Augmented Reality functions. The system is capable of tracking and classifying many thousands of objects at the same time, and visualizes the VCA outcome in a dedicated monitoring software. Moreover, the solution increases situational awareness by predicting certain proximity situations and it automatically detects various operational irregularities and FOD as well. LAARS automatically registers landings and take-offs, while offering invaluable data for statistical analysis and precise calculations. With the ability to accurately gauge aircraft dwell times within specified zones, Logipix provides invaluable insights for optimizing airport resource allocation and enhancing overall efficiency.

## Perceive more with high-end sensors

Our main sensors are purpose-designed Panorama Cameras with 300-960 MP resolution, which deliver fine details of even distant objects and at the same time cover immense areas. Watching large panoramic images, operators have better spatial orientation within the monitored area as the space is not split by individual images. The cameras deliver 20 fps video streams ensuring a seamless, glitch-free motion display.

TRAFFIC ENFORCEMENT

PROXIMITY ALERT

VIRTUAL FENCE

LANDING & TAKE-OFF

OBJECT TRACKING

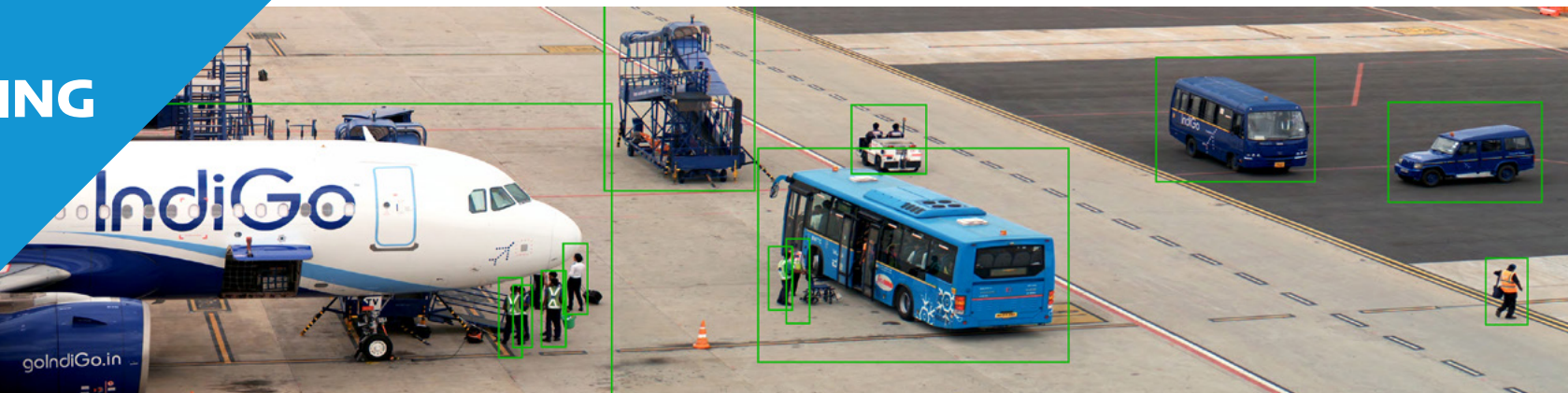
COLLISION PREDICTION

RUNWAY INCURSION DETECTION

GEOFENCING

FOD DETECTION

OBJECT HISTORY





## ABOUT LOGIPIX

Logipix is among the most innovative technological companies in the world, developing and manufacturing smart video monitoring solutions specifically for large-scale projects and wide areas. Our company is deeply engaged with the constant research and development to provide complete, intelligent systems using the latest microelectronic and computer technology available, while considering the specific characteristics of different application areas. With many years of experience improving some of the largest and busiest airports around the globe, Logipix can be your trusted company, who contributes to create safer, sustainable and more efficient environments at your airside.